

VMware Storage Policy SDK Programming Guide

vSphere 6.5

This document supports the version of each product listed and supports all subsequent versions until the document is replaced by a new edition. To check for more recent editions of this document, see <http://www.vmware.com/support/pubs>.

EN-002098-00

vmware®

You can find the most up-to-date technical documentation on the VMware Web site at:

<http://www.vmware.com/support/>

The VMware Web site also provides the latest product updates.

If you have comments about this documentation, submit your feedback to:

docfeedback@vmware.com

Copyright © 2013-2016 VMware, Inc. All rights reserved. This product is protected by U.S. and international copyright and intellectual property laws. VMware products are covered by one or more patents listed at <http://www.vmware.com/go/patents>.

VMware is a registered trademark or trademark of VMware, Inc. in the United States and/or other jurisdictions. All other marks and names mentioned herein may be trademarks of their respective companies.

VMware, Inc.
3401 Hillview Ave.
Palo Alto, CA 94304
www.vmware.com

Contents

Contents 3

About This Book 5

VMware Storage Policies 7

- Storage Capabilities 7
- Virtual Machine Storage 7
- Storage Profiles 7
- Storage Policy Operations 8
- Access to the VMware Storage Policy Server 8
- Storage Profile Queries 9
- VMware Storage Policy SDK 10
 - VMware Storage Policy SDK Examples 10

Storage Policy Server Connection 13

- Establish a Connection with the VMware Storage Policy Server 13
 - Server URLs 14
 - Establish the vCenter Session Connection for the Local Instance 14
 - Create the Storage Policy Server Connection 15

VSAN-Based Storage Profiles 17

- Create a VSAN Requirements Profile 17
 - Create an Individual Storage Requirement 18
 - Create a Storage Profile 18

Virtual Machine Storage Profiles 21

- Retrieve an Existing Storage Profile from the Storage Policy Server 21
- Apply the Storage Profile to a Virtual Machine 22

Tag-Based Storage Profiles 25

- Create a Tag-Based Storage Profile 25
 - Retrieve Tag Metadata 26
 - Create a Storage Profile 26

Policy Rules 29

- Create a Stand-Alone Virtual Disk with an Attached Storage Encryption Policy 29
 - Prerequisites 29
 - What to do next 30

Legacy Storage Profiles 31

- VASA 1.0 Storage Capability Upgrade 31
- vSphere Web Client User Label Conversion 32

vCenter Single Sign-On

- Client Example 35
 - vCenter Single Sign-On Token Request Overview 35

Using Handler Methods for SOAP Headers	36
Sending a Request for a Security Token	38
 vCenter LoginByToken Example	 41
vCenter Server Single Sign-On Session	41
HTTP and SOAP Header Handlers	41
Sample Code	42
Saving the vCenter Server Session Cookie	43
Using LoginByToken	44
Restoring the vCenter Server Session Cookie	45
 Index	 47

About This Book

VMware Storage Policy Programming Guide describes how to use the VMware® Storage Policy API.

VMware provides different APIs and SDKs for different applications and goals. The VMware Storage Policy SDK supports the development of vCenter clients that use vCenter storage profiles for virtual machine configuration.

To view the current version of this book as well as all VMware API and SDK documentation, go to http://www.vmware.com/support/pubs/sdk_pubs.html.

Intended Audience

This book is intended for anyone who needs to develop applications using the VMware Storage Policy SDK. An understanding of Web Services technology and some programming background in Java is required.

VMware Technical Publications Glossary

VMware Technical Publications provides a glossary of terms that might be unfamiliar to you. For definitions of terms as they are used in VMware technical documentation go to <http://www.vmware.com/support/pubs>.

Document Feedback

VMware welcomes your suggestions for improving our documentation. Send your feedback to docfeedback@vmware.com.

1

VMware Storage Policies

A vSphere storage profile defines storage policy information that describes storage requirements for virtual machines and storage capabilities of storage providers. You use VMware Storage Policies to manage the association between virtual machines and datastores.

NOTE A Storage Policy API profile consists of a set of *subprofiles*. A subprofile defines a set of storage capabilities. A subprofile corresponds to a *rule set* in the vSphere Web Client.

Storage Capabilities

Storage requirements are based on the storage capabilities available from a storage provider. A Storage Policy Server obtains storage capability data from VASA 2.0 providers or from tag-based storage policies.

- VASA 2.0 providers - vSphere supports VMware VSAN storage capabilities only.
- Tag-based storage - You use the vSphere Web Client to define storage policy tags.

Virtual Machine Storage

Virtual machine configuration and data are stored in datastores.

- Virtual machine configuration is stored in files with the .vmx file extension. The set of virtual machine configuration files also includes other system files that support virtual machine operation. Examples of these system files include log files (.log), BIOS state files (.nvram), paging files (.vmem), and snapshot data files (.vmsd).
- Virtual machine data is stored on virtual disks, in files with the .vmdk file extension.

VMware Storage Policies allow you to distinguish between virtual machine configuration and data files and to specify storage locations based on the distinction.

Storage Profiles

To use a storage profile, you define storage requirements and associate the profile with a virtual machine. When you create a virtual machine, the vCenter Server will use the virtual machine's storage profile and the Storage Policy Server to determine a location for the virtual machine files.

Storage Policy Operations

Use Storage Policy API methods to support virtual machine provisioning.

Table 1-1. Storage Policy Operations and Virtual Machine Provisioning

Storage Policy Operation (Storage Policy API)	Virtual Machine Provisioning (vSphere API)
Use the <code>PbmProfileProfileManager</code> methods to create and update storage profiles.	Associate storage profiles with virtual machines and virtual disks. See the description of the vSphere API data object properties <code>VirtualMachineConfigSpec.vmProfile</code> and <code>FileBackedVirtualDiskSpec.profile</code> in the vSphere API Reference. You can also use the vSphere Web Client to associate a storage profile with a virtual machine or virtual disk.
Use the <code>PbmPlacementSolver</code> methods to identify candidate datastores for storage locations.	Specify the datastores when you create virtual machines and virtual disks. See the description of the vSphere API data object properties <code>VirtualMachineFileInfo.vmPathName</code> and <code>VirtualDeviceFileBackingInfo.datastore</code> in the vSphere API Reference.
Use the <code>PbmComplianceManager</code> methods to check compliance between storage requirements and capabilities.	After you associate a storage profile with a virtual machine or virtual disk, the Server will identify non-compliance if the datastore does not satisfy the requirements of the profile.

Access to the VMware Storage Policy Server

The VMware Storage Policy client API is described in the WSDL (Web Service Definition Language) file that is included in the [VMware Storage Policy SDK](#). This API defines a set of request operations that you use to manipulate storage profiles. The VMware Storage Policy SDK includes Java bindings for the VMware Storage Policy WSDL.

To gain access to the Storage Policy Server, your client connects to a vCenter Server and obtains the vCenter session cookie. Then you can use the vCenter session cookie to establish the connection with the Storage Policy Server. See [“Establish a Connection with the VMware Storage Policy Server”](#) on page 13.

After you establish a Storage Policy Server connection, your client uses language-specific Web Services access objects and the `PbmServiceInstance` and `PbmServiceInstanceContent` objects to access the Storage Policy managed objects and their methods.

The Storage Policy Web Services access objects are language-specific API binding objects that are generated from the Storage Policy WSDL. The VMware Storage Policy SDK contains JAXWS bindings to the Storage Policy API. The JAXWS bindings include the `PbmService` and `PbmPortType` Web Services access objects.

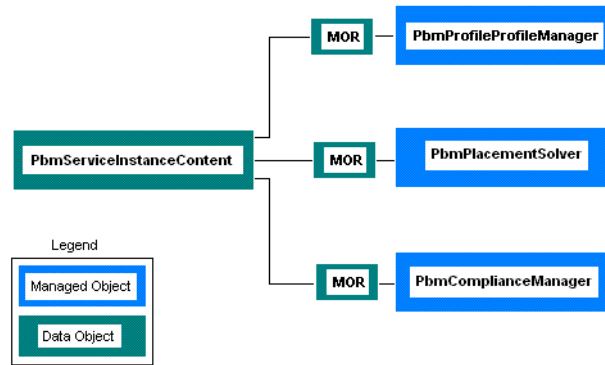
- `PbmService` – Provides access to the `PbmPortType` object and it provides support for the Storage Policy Service connection.
- `PbmPortType` – Provides access to Storage Policy methods.

The following code fragment shows the sequence of calls that you use to obtain access to the Storage Policy API methods.

Example 1-1. Access to Storage Policy API Methods

```
import com.vmware.pbm.PbmService;
import com.vmware.pbm.PbmPortType;
import com.vmware.pbm.PbmServiceInstanceContent;
[...]
PbmService = new PbmService()
PbmPortType pbmPort = PbmService.getPbmPort()
PbmServiceInstanceContent pbmServiceContent = pbmPort.pbmRetrieveServiceContent
```

The following figure shows the `PbmServiceInstanceContent` data object and the Storage Policy managed objects that provide access to Storage Policy services.

Figure 1-1. Storage Policy Service Instance Content

The `PbmServiceInstanceContent` object contains managed object references to the Storage Policy services. The set of Storage Policy services include the profile manager, placement solver, and compliance manager.

Table 1-2. Storage Policy Services

Service	ManagedObject	Usage
Profile Manager	<code>PbmProfileProfileManager</code>	Create and update VMware storage profiles. Storage profiles define storage requirements.
Placement Solver	<code>PbmPlacementSolver</code>	Identify candidate datastores for storage locations.
Compliance Manager	<code>PbmComplianceManager</code>	Check compliance between storage requirements and capabilities.

Storage Profile Queries

The Storage Policy API includes several methods that you can use to query for profiles and vSphere entities (datastores, virtual machines, and virtual disks). The following table provides an overview of these methods. For more information, see the Storage Policy API Reference.

Table 1-3. Storage Profile API Query Methods

Method	Description
<code>PbmQueryAssociatedEntiy</code>	Returns references to entities associated with the specified profile.
<code>PbmQueryAssociatedProfile</code>	Returns profiles associated with the specified entity. The type of profile is determined by the type of entity that you specify. <ul style="list-style-type: none"> ■ If you specify a datastore, the method returns one or more capability (resource) profiles. ■ If you specify a virtual machine or virtual disk, the method returns one or more requirement profiles.
<code>PbmQueryAssociatedProfiles</code>	Returns <code>PbmQueryProfileResult</code> objects. Each result object identifies an entity and one or more profiles. Profile type is determined by entity type. <ul style="list-style-type: none"> ■ If the entity is a datastore, the result object contains one or more capability (resource) profiles. ■ If the entity is a virtual machine or virtual disk, the result object contains one or more requirement profiles.
<code>PbmQueryMatchingHub</code>	Returns datastores and/or datastore clusters that satisfy the specified requirement profile. To retrieve the profiles associated with a datastore, call <code>PbmQueryMatchingHub</code> for each profile in the system. In the vSphere Web Client, datastore clusters are called storage pods.
<code>PbmQueryMatchingHubWithSpec</code>	Returns datastores and or datastore clusters that satisfy the criteria in the capability create specification.
<code>PbmQueryProfile</code>	Returns requirement profiles or resource profiles, or both.

VMware Storage Policy SDK

The VMware Storage Policy SDK is distributed as part of the VMware vSphere Management SDK. When you extract the contents of the distribution kit, the VMware Storage Policy SDK is located in the `spbm` sub-directory:

```
VMware-vSphere-SDK-build-num
  eam
  sms-sdk
  spbm
    docs
      java
        pbm-apiref
      java
        JAXWS
          lib
          samples
    wsdl
    ssoclient
    vsphere-ws
```

The following table shows the locations of the contents of the VMware Storage Policy SDK.

Table 1-4. VMware Storage Policy SDK Contents

VMware Storage Policy SDK Component	Location
JAX-WS VMware Storage Policy client binding	<code>spbm/java/JAXWS/lib</code>
Java Storage Policy samples	<code>spbm/java/JAXWS/samples/com/vmware/spbm/samples/</code>
Java Storage Policy Server connection sample	<code>spbm/java/JAXWS/samples/com/vmware/spbm/connection/</code>
VMware Storage Policy API Reference	<code>spbm/docs/pbm-apiref/index.html</code>
Documentation for example code	<code>spbm/docs/java/JAXWS/samples/javadoc/index.html</code>
WSDL files	<code>spbm/wsdl</code>

VMware Storage Policy SDK Examples

The VMware Storage Policy SDK contains Java examples that show how to create and use VMware storage policies.

This manual describes examples from the VMware Storage Policy SDK. It also describes examples from the vCenter Single Sign-On SDK that support the client connection to the Storage Policy Server. This manual includes the following single sign-on examples:

- [“vCenter Single Sign-On Client Example”](#) on page 35. This example shows how to obtain a holder-of-key token from the vCenter Single Sign-On Server.
- [“vCenter LoginByToken Example”](#) on page 41. This example shows how to use the token to login to vCenter Server.

The following table lists the sample files in the VMware Storage Policy SDK:

Table 1-5. VMware Storage Profile SDK Sample File

Location	Examples	Description
<code>SDK/spbm/java/JAXWS/samples/com/vmware/spbm/samples/</code>		

Table 1-5. VMware Storage Profile SDK Sample File

Location	Examples	Description
	AboutInfo.java	Obtains identifying data about the Storage Policy Server.
	CheckCompliance.java	Checks the compliance of profiles associated with virtual machines and virtual disks.
	CreateProfile.java	Creates a requirement profile.
	DeleteProfile.java	Deletes a requirement profile.
	EditProfile.java	Adds or deletes subprofiles from a tag-based storage profile.
	ListProfiles.java	Retrieves all of the storage profiles known to the system.
	VMClone.java	Deploys multiple instances of a virtual machine template to a datacenter. The clone specification has an associated storage profile.
	VMCreate.java	Creates a virtual machine. The virtual machine configuration specification has an associated storage profile.
	ViewProfile.java	Prints the contents of a tag-based storage profile.
SDK/spbm/java/JAXWS/samples/com/vmware/spbm/connection/		
	BasicConnection.java	Establishes an authenticated session with a VMware SSO Server, vCenter Server, and Storage Policy Server.
	ConnectedServiceBase.java	Connection base class for client application implementations.
	Connection.java	Storage Policy sample support; utility class that sets up a Storage Policy Server connection.
	ConnectionException.java	Base exception class for exceptions thrown by connection classes.
	ConnectionMalformedURLException.java	URL exception.
	KeepAlive.java	Keep-alive utility class; maintains the vCenter Server connection.
	VcSessionHandler.java	Utility class; inserts vCenter session cookie into SOAP header.

2

Storage Policy Server Connection

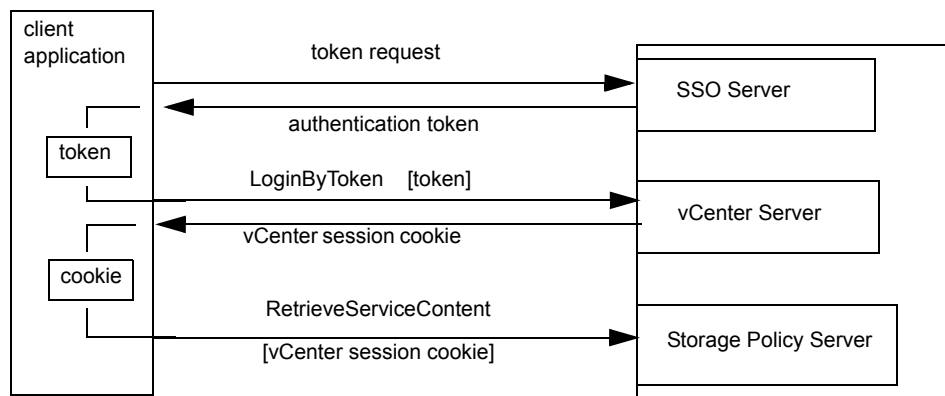
The connection between a Storage Policy client and the Storage Policy Server is based on the client's connection with a vCenter Server. A vCenter Server client uses an HTTP session cookie to maintain a persistent connection with the Server. A Storage Policy client uses the vCenter Server session cookie to establish the connection with the Storage Policy Server.

A client performs the following operations to establish vCenter Server and Storage Policy Server sessions.

- Obtain a SAML token from the VMware SSO Server.
See [“vCenter Single Sign-On Client Example”](#) on page 35.
- Use the SAML token to login to the vCenter Server.
See [“vCenter LoginByToken Example”](#) on page 41.
- Use the `RetrieveServiceContent` method to send the session cookie to the Storage Policy Server and establish the connection with the Server.

The following figure shows a representation of the server connections and operations involved in establishing a Storage Policy Server connection.

Figure 2-1. Storage Policy Server Connection



Establish a Connection with the VMware Storage Policy Server

Use the session cookie from the vCenter Server session to establish the Storage Policy session. The session cookie represents the authenticated vCenter Server session, which is based on the SSO token.

The following code fragments establish connections both with the vCenter Server and the Storage Policy Server. These examples are based on the `BasicConnection` sample which is located in the Storage Policy SDK connection sample directory:

```
SDK/spbm/java/JAXWS/samples/com/vmware/spbm/connection/BasicConnection.java
```

The `BasicConnection` sample uses an instance of the `LoginByTokenSample` class. See [“vCenter LoginByToken Example”](#) on page 41. The `LoginByToken` example saves the HTTP cookie produced during the initial connection sequence and then restores the cookie after the vCenter Server connection has been established. Although the `LoginByToken` example creates a vCenter Server connection, the `BasicConnection` sample establishes its own connection with the vCenter Server. A different implementation might integrate those capabilities to reduce the number of vCenter Server connections.

Server URLs

The `BasicConnection` sample creates connections to three VMware Servers.

- SSO Server
- vCenter Server
- Storage Policy Server

In the example configuration, the SSO and Storage Policy Servers are located on the same system as the vCenter Server. In other configurations, the SSO Server may be located on a different server.

Table 2-1. VMware Server URLs

VMware Server	URL
vCenter Server	<code>https://server-name IPaddress/sdk/vimService</code>
SSO Server	<code>https://server-name IPaddress/sts/STSService</code>
Storage Policy Server	<code>https://server-name IPaddress/pbm</code>

Establish the vCenter Session Connection for the Local Instance

The following code fragment sets up the HTTP connection with the vCenter Server.

- 1 Retrieve the `VimPort` interface. This provides access to the vSphere API methods.
- 2 Retrieve the request context and set the vCenter Server endpoint address in the request context.
- 3 Set the session cookie in the request context. The cookie (`cookieVal`) is obtained from the [vCenter LoginByToken Example](#).
- 4 Call the `RetrieveServiceContent` method to establish the HTTP connection with the vCenter Server.

Example 2-1. vCenter Server Connection

```
// 1. Retrieve the VimPort interface.
vimService = new VimService();
vimPort = vimService.getVimPort();

// 2. Retrieve the request context and set the vCenter Server endpoint.
Map<String, Object> ctxt = ((BindingProvider) vimPort).getRequestContext();
ctxt.put(BindingProvider.ENDPOINT_ADDRESS_PROPERTY, vcurl.toString());
ctxt.put(BindingProvider.SESSION_MAINTAIN_PROPERTY, true);

// 3. Put the extracted vCenter session cookie into the VimPortType request header.
Map<String, List<String>> headers =
    (Map<String, List<String>>) ctxt.get(MessageContext.HTTP_REQUEST_HEADERS);
if (headers == null) {
    headers = new HashMap<String, List<String>>();
}
headers.put("Cookie", Arrays.asList(cookieVal));
ctxt.put(MessageContext.HTTP_REQUEST_HEADERS, headers);

// 4. Retrieve the vCenter Server service content. (Establishes the HTTP connection)
vimServiceContent = vimPort.retrieveServiceContent(this.getVimServiceInstanceReference());
```

Create the Storage Policy Server Connection

The following code fragment uses a vCenter session cookie to create a Storage Policy Server session.

- 1 Extract the actual cookie value from the `name=value` expression in the cookie string obtained from the vCenter session connection.
- 2 Create a `PbmService` object.
- 3 Set up a header handler to support adding the vCenter session cookie to the Storage Policy Server connection.
- 4 Retrieve the `PbmPort` object for access to the Storage Policy API methods.
- 5 Retrieve the request context and set the endpoint to the Storage Policy Server URL.
- 6 Call the `PbmRetrieveServiceContent` method to establish the HTTP connection to the Storage Policy Server.

Example 2-2. Storage Policy Server Connection

```
// 1. Set the extracted cookie in the PbmPortType
//
// Need to extract only the cookie value
String[] tokens = cookieVal.split(";");
tokens = tokens[0].split("=");
String extractedCookie = tokens[1];

// 2. Create a PbmService object.
pbmService = new PbmService();

// 3. Setting the header resolver for adding the VC session cookie to the
// requests for authentication
HeaderHandlerResolver headerResolver = new HeaderHandlerResolver();
headerResolver.addHandler(new VcSessionHandler(extractedCookie));
pbmService.setHandlerResolver(headerResolver);

// 4. Retrieve the PbmPort object for access to the Storage Policy API
pbmPort = pbmService.getPbmPort();

// 5. Set the Storage Policy Server endpoint
Map<String, Object> pbmCtxt = ((BindingProvider) pbmPort).getRequestContext();
pbmCtxt.put(BindingProvider.SESSION_MAINTAIN_PROPERTY, true);
pbmCtxt.put(BindingProvider.ENDPOINT_ADDRESS_PROPERTY, spbmurl.toString());

// 6. Retrieve the service content (creates the connection)
pbmServiceContent = pbmPort.pbmRetrieveServiceContent(getPbmServiceInstanceReference());
```


3

VSAN-Based Storage Profiles

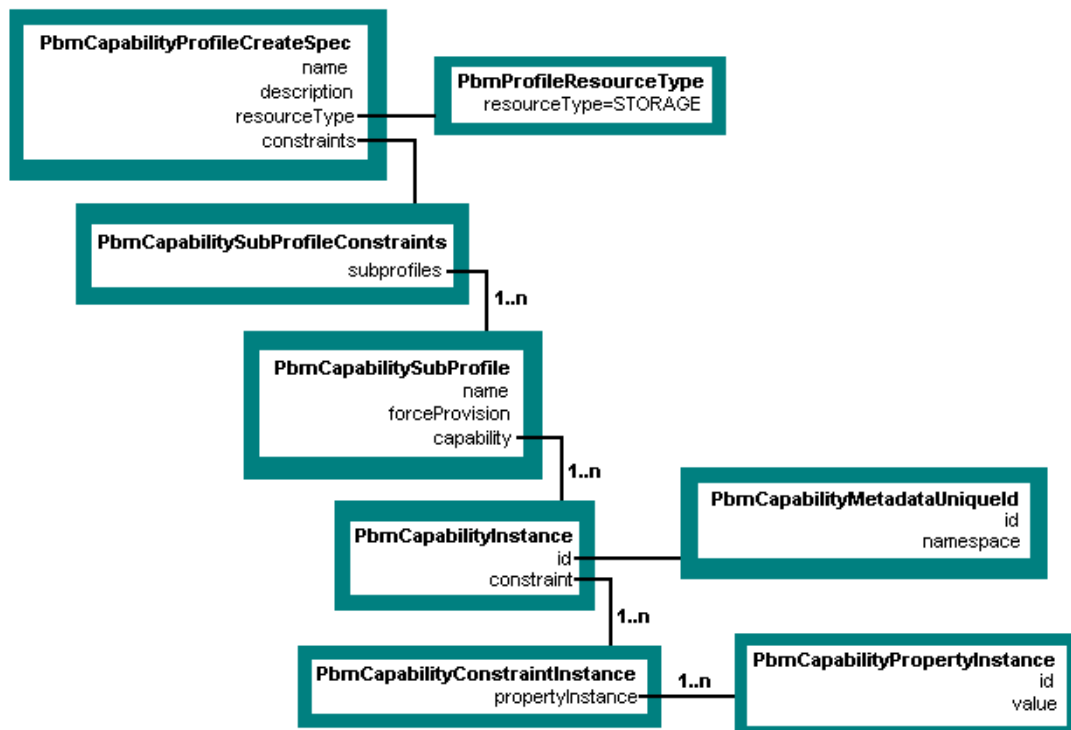
Storage requirements are based on the storage capabilities available from a storage provider. vSphere supports VMware VSAN storage capabilities. To create a requirements profile based on VSAN capabilities, you retrieve metadata that describes the VSAN capabilities and create a subprofile that expresses the storage requirements for virtual machine or virtual disk files. To perform these operations, you use a connection to the Storage Policy Server.

Create a VSAN Requirements Profile

The following example demonstrates how to create a storage requirements profile based on vSphere VSAN storage capabilities. The example creates a requirement profile for VSAN stripe width.

The following figure shows the data objects used for a profile specification.

Figure 3-1. Storage Profile Specification



The following example is based on the Storage Policy SDK sample file `CreateVSANProfile.java`. This example is divided into two code fragments:

- [Create an Individual Storage Requirement](#) – The code fragment is a function that creates a single storage capability instance for a subprofile (rule).
- [Create a Storage Profile](#) – The code fragment builds a profile specification and creates the profile.

Create an Individual Storage Requirement

The following example builds a property instance for a capability. The property instance represents a single storage requirement. The code performs the following steps:

- 1 Verifies that the capability exists.
- 2 Creates a property instance for the requirement (`PbmCapabilityPropertyInstance`).
- 3 Creates a capability constraint for the property instance (`PbmCapabilityConstraintInstance`).
- 4 Create a capability instance for the constraint and add the subprofile (rule) to the capability.

Example 3-1.

```
PbmCapabilityInstance buildCapability(String capabilityName, Object value,
    List<PbmCapabilityMetadataPerCategory> metadata)
    throws InvalidArgumentFaultMsg {

    // Retrieve the metadata for the capability (stripeWidth)
    PbmCapabilityMetadata capabilityMeta = PbmUtil.getCapabilityMeta(capabilityName, metadata);
    if (capabilityMeta == null)
        throw new InvalidArgumentFaultMsg("Specified Capability does not exist", null);

    // Create a New Property Instance based on the Stripe Width Capability
    PbmCapabilityPropertyInstance prop = new PbmCapabilityPropertyInstance();
    prop.setId(capabilityName);
    prop.setValue(value);

    // Associate Property Instance with a Rule (subprofile)
    PbmCapabilityConstraintInstance rule = new PbmCapabilityConstraintInstance();
    rule.getPropertyInstance().add(prop);

    // Associate Rule (subprofile) with a Capability Instance
    PbmCapabilityInstance capability = new PbmCapabilityInstance();
    capability.setId(capabilityMeta.getId());
    capability.getConstraint().add(rule);

    return capability;
}
```

Create a Storage Profile

The example performs the following operations.

- 1 Retrieve a reference to the Storage Policy Profile Manger.
- 2 Verify that there is VSAN Storage Policy support.
- 3 Retrieve the VSAN storage capability metadata.
- 4 Add capabilities to be used as requirements.
- 5 Add the requirement capabilities to a subprofile. A subprofile corresponds to a rule set in the vSphere Web Client.
- 6 Specify the subprofile as capability constraints.
- 7 Build a profile specification.
- 8 Create the storage profile.

When you create a storage profile, the `PbmCreate` method returns a profile ID (`PbmProfileId`). The Profile Manager maintains a list of profiles. To obtain a profile from the list, use the `PbmQueryProfile` and `PbmRetrieveContent` methods. See [“Retrieve an Existing Storage Profile from the Storage Policy Server”](#) on page 21.

Example 3-2. VSAN Storage Profile Creation

```
// 1: Get PBM Profile Manager & Associated Capability Metadata
spbmsc = connection.getPbmServiceContent();
ManagedObjectReference profileMgr = spbmsc.getProfileManager();

// 2: Verify that there is vSAN Storage Policy support
Boolean vSanCapable = false;
List<PbmCapabilityVendorResourceTypeInfo> vendorInfo =
    connection.getPbmPort().pbmFetchVendorInfo(profileMgr, null);
for (PbmCapabilityVendorResourceTypeInfo vendor : vendorInfo)
    for (PbmCapabilityVendorNamespaceInfo vnsi : vendor.getVendorNamespaceInfo())
        if (vnsi.getNamespaceInfo().getNamespace().equals("vSan")) {
            vSanCapable = true;
            break;
        }

if (!vSanCapable)
    throw new RuntimeFaultFaultMsg(
        "Cannot create storage profile. vSAN Provider not found.", null);

// 3: Get PBM Supported Capability Metadata
List<PbmCapabilityMetadataPerCategory> metadata =
    connection.getPbmPort().pbmFetchCapabilityMetadata(profileMgr,
        PbmUtil.getStorageResourceType(), null);

// 4: Add Provider Specific Capabilities
List<PbmCapabilityInstance> capabilities = new ArrayList<PbmCapabilityInstance>();
capabilities.add(buildCapability("stripeWidth", stripeWidth, metadata));

// 5: Add Capabilities to a RuleSet (subprofile)
PbmCapabilitySubProfile ruleSet = new PbmCapabilitySubProfile();
ruleSet.getCapability().addAll(capabilities);

// 6: Add Rule-Set (subprofile) to Capability Constraints
PbmCapabilitySubProfileConstraints constraints = new PbmCapabilitySubProfileConstraints();
ruleSet.setName("Rule-Set " + (constraints.getSubProfiles().size() + 1));
constraints.getSubProfiles().add(ruleSet);

// 7: Build Capability-Based Profile
PbmCapabilityProfileCreateSpec spec = new PbmCapabilityProfileCreateSpec();
spec.setName(profileName);
spec.setDescription("Storage Profile Created by SDK Samples. Rule based on vSAN capability");
spec.setResourceType(PbmUtil.getStorageResourceType());
spec.setConstraints(constraints);

// 8: Create Storage Profile
PbmProfileId profile = connection.getPbmPort().pbmCreate(profileMgr, spec);
System.out.println("Profile " + profileName + " created with ID: " + profile.getId());
```


4

Virtual Machine Storage Profiles

The Storage Policy Server maintains a list of storage profiles. To apply a storage profile to a virtual machine, perform the following operations:

- [Retrieve an Existing Storage Profile from the Storage Policy Server](#)
- [Apply the Storage Profile to a Virtual Machine.](#)

The code fragments in this chapter are based on the Storage Policy SDK sample file `VMCreate.java`.

Retrieve an Existing Storage Profile from the Storage Policy Server

The following code fragment shows the example function `getPbmProfileSpec` that uses the `PbmQueryProfile` and `PbmRetrieveContent` methods to retrieve storage profiles. In the context of the Storage Policy SDK example `VMCreate.java`, the function returns a `VirtualMachineDefinedProfileSpec` to be used to configure storage for a virtual machine.

The function performs the following operations:

- 1 Uses the connection to the Storage Policy Server to retrieve a reference to the Profile Manager.
- 2 Calls the `PbmQueryProfile` method to obtain the list of storage profile identifiers.
- 3 Calls the `PbmRetrieveContent` method to obtain the list of storage profiles.
- 4 Finds the profile that matches the specified profile name.
- 5 Creates a `VirtualMachineDefinedProfileSpec` and assigns the identifier from the named profile to the `VirtualMachineDefinedProfileSpec`. You use the `VirtualMachineDefinedProfileSpec` when you configure the virtual machine. See [“Apply the Storage Profile to a Virtual Machine”](#) on page 22.

Example 4-1. Retrieving a Storage Profile

```
VirtualMachineDefinedProfileSpec getPbmProfileSpec(String name)
    throws InvalidArgumentFaultMsg, com.vmware.pbm.RuntimeFaultFaultMsg,
    RuntimeFaultFaultMsg {

    // 1 Get PBM Profile Manager
    PbmServiceInstanceContent spbmisc = connection.getPbmServiceContent();
    ManagedObjectReference profileMgr = spbmisc.getProfileManager();

    // 2 Retrieve the list of profile identifiers.
    List<PbmProfileId> profileIds =
        connection.getPbmPort().pbmQueryProfile(profileMgr,
                                                    PbmUtil.getStorageResourceType(),
                                                    null);

    if (profileIds == null || profileIds.isEmpty())
        throw new RuntimeFaultFaultMsg("No storage Profiles exist.", null);

    // 3 Retrieve the list of storage profiles.
    List<PbmProfile> pbmProfiles =
```

```

        connection.getPbmPort().pbmRetrieveContent(profileMgr, profileIds);

// 4,5 Find the named profile and create a VirtualMachineDefinedProfileSpec
//      that will use the same profile identifier.
for (PbmProfile pbmProfile : pbmProfiles) {
    if (pbmProfile.getName().equals(name)) {
        PbmCapabilityProfile profile = (PbmCapabilityProfile) pbmProfile;
        VirtualMachineDefinedProfileSpec spbmProfile =
            new VirtualMachineDefinedProfileSpec();

        spbmProfile.setProfileId(profile.getProfileId().getUniqueId());

        return spbmProfile;
    }
}

// Throw exception if none found
throw new InvalidArgumentFaultMsg(
    "Specified storage profile name does not exist.", null);
}

```

Apply the Storage Profile to a Virtual Machine

To use a storage profile for a virtual machine, specify a `VirtualMachineDefinedProfileSpec` object for the `VirtualMachineConfigSpec.vmProfile` property.

The following code fragment sets the storage profile and creates the virtual machine. The profile (`spbmlProfile`) is a `VirtualMachineDefinedProfileSpec`. See [“Retrieve an Existing Storage Profile from the Storage Policy Server”](#) on page 21.

Example 4-2. Associating a Storage Profile with a Virtual Machine

```

[...]
```

```

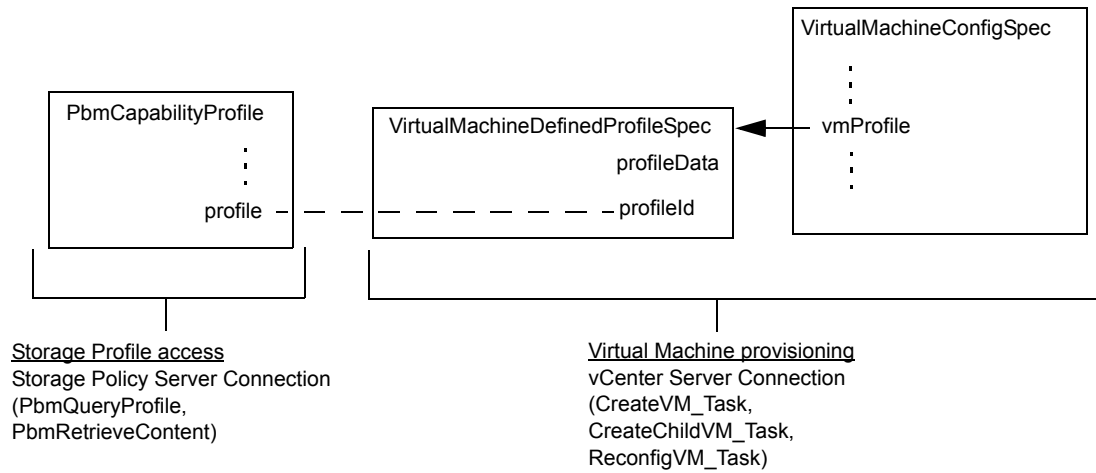
VirtualMachineConfigSpec configSpec = new VirtualMachineConfigSpec();
// Set SPBM profile
configSpec.getVmProfile().add(spbmlProfile);
[...]
```

```

ManagedObjectReference taskmor =
    connection.getVimPort().createVMTask(vmFolderMor, vmConfigSpec, resourcepoolmor, hostmor);

```

The following figure shows how a storage profile is integrated into a virtual machine configuration specification. Your client establishes the link between the storage profile (`PbmCapabilityProfile`) and the `VirtualMachineDefinedProfileSpec` by setting the `profileId` property in the `VirtualMachineDefinedProfileSpec`. The Server sets the `profileData` property when it configures the virtual machine.

Figure 4-1. Using a Storage Profile for Virtual Machine Provisioning

5

Tag-Based Storage Profiles

To use a tag-based storage profile, you assign a storage policy tag to a datacenter, define a storage requirement profile based on the tag, and associate the profile with a virtual machine. When you create the virtual machine, the vCenter Server will use the Storage Policy Server to resolve the tag reference in the profile and determine a datastore for virtual machine storage.

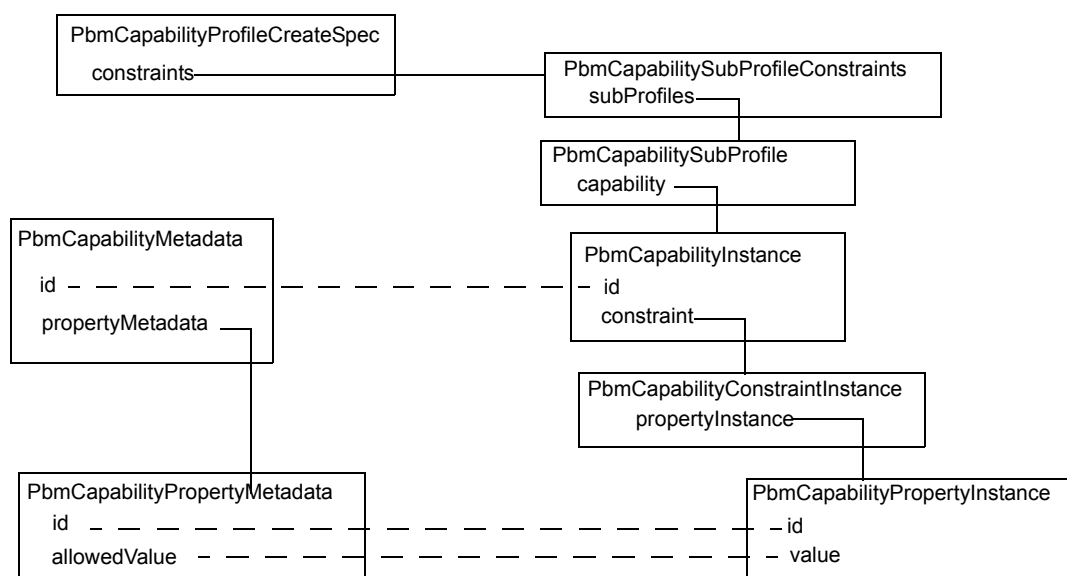
- To associate a storage policy tag with a datacenter, use the vSphere Web Client.
- To create a tag-based storage requirements profile, you retrieve metadata associated with a storage policy tag and create a storage profile that contains identifiers from the tag metadata.
- To associate the storage profile with a virtual machine, see [“Apply the Storage Profile to a Virtual Machine”](#) on page 22.

Create a Tag-Based Storage Profile

The following figure shows a storage profile specification and the associated tag metadata.

- The subprofile capability instance identifier (`PbmCapabilityInstance.id`) is set to the storage policy tag metadata identifier (`PbmCapabilityMetadata.id`).
- The capability property instance (`PbmCapabilityPropertyInstance`) specifies both an identifier and a value. Both properties are set to the tag metadata `id` and `allowedValue` properties.

Figure 5-1. Tag-Based Storage Profile Specification



The following example demonstrates how to create a storage requirements profile based on a storage policy tag. The example is divided into two sections:

- [Retrieve Tag Metadata](#)
- [Create a Storage Profile](#)

Retrieve Tag Metadata

The following example shows a code fragment that retrieves metadata for a tag category. Given the list of metadata obtained from the Storage Policy Server, the function traverses the list and returns the metadata associated with the specified category. This function is defined in the `PbmUtil` package in the Storage Policy SDK.

Example 5-1. `getTagCategoryMeta` (PbmUtil Package)

```
public static PbmCapabilityMetadata getTagCategoryMeta(
    String tagCategoryName, List<PbmCapabilityMetadataPerCategory> schema) {
    for (PbmCapabilityMetadataPerCategory cat : schema)
        if (cat.getSubCategory().equals("tag"))
            for (PbmCapabilityMetadata cap : cat.getCapabilityMetadata())
                if (cap.getId().getId().equals(tagCategoryName))
                    return cap;
    return null;
}
```

Create a Storage Profile

The example performs the following operations.

- 1 Create a property instance with tags from the specified tag category.
- 2 Associate the property instance with a constraint (rule).
- 3 Associate the constraint with a capability instance.
- 4 Add the capability instance to a subprofile (rule set).
- 5 Add the subprofile to the list of subprofile constraints.
- 6 Build a profile specification.
- 7 Create the storage profile.

The following example is based on the Storage Policy SDK sample file `CreateProfile.java`.

Example 5-2. Tag-Based Storage Profile Creation

```
// Get PBM Profile Manager and PBM Capability Metadata
spbmvc = connection.getPbmServiceContent();
ManagedObjectReference profileMgr = spbmvc.getProfileManager();

List<PbmCapabilityMetadataPerCategory> metadata =
    connection.getPbmPort().pbmFetchCapabilityMetadata(
        profileMgr, PbmUtil.getStorageResourceType(), null);

// Step 1: Create Property Instance with tags from the specified Category
PbmCapabilityMetadata tagCategoryInfo = PbmUtil.getTagCategoryMeta(tagCategoryName, metadata);

// Fetch Property Metadata of the Tag Category
List<PbmCapabilityPropertyMetadata> propMetaList = tagCategoryInfo.getPropertyMetadata();
PbmCapabilityPropertyMetadata propMeta = propMetaList.get(0);

// Create a New Property Instance based on the Tag Category ID
PbmCapabilityPropertyInstance prop = new PbmCapabilityPropertyInstance();
prop.setId(propMeta.getId());
```

```

// Fetch Allowed Tag Values Metadata; cast the xsd:any property (allowedValue) to a discrete set
PbmCapabilityDiscreteSet tagSetMeta = (PbmCapabilityDiscreteSet) propMeta.getAllowedValue();

// Create a New Discrete Set for holding Tag Values
PbmCapabilityDiscreteSet tagSet = new PbmCapabilityDiscreteSet();
for (Object obj : tagSetMeta.getValues()) {
    tagSet.getValues().add(((PbmCapabilityDescription) obj).getValue());
}
prop.setValue(tagSet);

// Step 2: Associate Property Instance with a Rule
PbmCapabilityConstraintInstance rule = new PbmCapabilityConstraintInstance();
rule.getPropertyInstance().add(prop);

// Step 3: Associate Rule with a Capability Instance
PbmCapabilityInstance capability = new PbmCapabilityInstance();
capability.setId(tagCategoryInfo.getId());
capability.getConstraint().add(rule);

// Step 4: Add Rule to a RuleSet
PbmCapabilitySubProfile ruleSet = new PbmCapabilitySubProfile();
ruleSet.getCapability().add(capability);

// Step 5: Add Rule-Set to Capability Constraints
PbmCapabilitySubProfileConstraints constraints = new PbmCapabilitySubProfileConstraints();
ruleSet.setName("Rule-Set " + (constraints.getSubProfiles().size() + 1));
constraints.getSubProfiles().add(ruleSet);

// Step 6: Build Capability-Based Profile
PbmCapabilityProfileCreateSpec spec = new PbmCapabilityProfileCreateSpec();
spec.setName(profileName);
spec.setDescription("Tag Based Storage Profile Created by SDK Samples. Rule based on tags from
    Category "
        + tagCategoryName);
spec.setResourceType(PbmUtil.getStorageResourceType());
spec.setConstraints(constraints);

// Step 7: Create Storage Profile
PbmProfileId profile = connection.getPbmPort().pbmCreate(profileMgr, spec);

```


6

Policy Rules

You can create custom storage policy strings to specify policy rules.

Create a Stand-Alone Virtual Disk with an Attached Storage Encryption Policy

The following example shows how to format an XML string to specify an I/O filter policy for a virtual disk.

The format is specific to the current version of the VMware Web Services API. This format might not be compatible with other API versions.

Prerequisites

- Verify that the name for the policy is user-friendly.
- Verify that the ID string to identify the policy is unique. The ID must be unique among the set of policies known to SPBM.

Procedure

- 1 Build the policy `<capability>` element, which specifies the filter.

```
<capability>
  <capabilityId>
    <id>vmwarevmcrypt@encryption</id>
    <namespace>IOFILTERS</namespace>
    <constraint></constraint>
  </capabilityId>
</capability>
```

- 2 Wrap the `<capability>` element singly in a `<subProfiles>` element, adding the rule name.

```
<subProfiles>
  <capability>
    <capabilityId>
      <id>vmwarevmcrypt@encryption</id>
      <namespace>IOFILTERS</namespace>
      <constraint></constraint>
    </capabilityId>
  </capability>
  <name>Rule-Set 1: IOFILTERS</name>
</subProfiles>
```

- 3 Wrap the `<subProfiles>` element singly in a `<constraints>` element.

```
<constraints>
  <subProfiles>
    <capability>
      <capabilityId>
        <id>vmwarevmcrypt@encryption</id>
        <namespace>IOFILTERS</namespace>
        <constraint></constraint>
      </capabilityId>
    </capability>
```

- ```

 <name>Rule-Set 1: IOFILTERS</name>
 </subProfiles>
 </constraints>

```
- 4 Append profile metadata, such as name and creation date.

```

 <constraints>
 <subProfiles>
 <capability>
 <capabilityId>
 <id>vmwarevmcrypt@encryption</id>
 <namespace>IOFILTERS</namespace>
 <constraint></constraint>
 </capabilityId>
 </capability>
 <name>Rule-Set 1: IOFILTERS</name>
 </subProfiles>
 </constraints>
 <createdBy>client</createdBy>
 <creationTime>1999-12-31T23:59:59Z</creationTime>
 <lastUpdatedTime>1999-12-31T23:59:59Z</lastUpdatedTime>
 <generationId>1</generationId>
 <name>IOfilter-Encrypt</name>

```

- 5 Wrap the <constraints> element and metadata in a <storageProfile> element, and prefix an XML header.

```

<?xml version='1.0' encoding='UTF-8'?>
<storageProfile xsi:type='StorageProfile'>
 <constraints>
 <subProfiles>
 <capability>
 <capabilityId>
 <id>vmwarevmcrypt@encryption</id>
 <namespace>IOFILTERS</namespace>
 <constraint></constraint>
 </capabilityId>
 </capability>
 <name>Rule-Set 1: IOFILTERS</name>
 </subProfiles>
 </constraints>
 <createdBy>client</createdBy>
 <creationTime>1999-12-31T23:59:59Z</creationTime>
 <lastUpdatedTime>1999-12-31T23:59:59Z</lastUpdatedTime>
 <generationId>1</generationId>
 <name>IOfilter-Encrypt</name>
 <profileId>I am Unique</profileId>
</storageProfile>

```

## What to do next

You can create a ProfileSpec to contain the XML data. See the *vSphere Web Services SDK Programming Guide*.

## 7

# Legacy Storage Profiles

---

vSphere 5.0/5.1 systems support limited storage capability and requirement profiles. In vSphere 5.5, the Storage Policy Server supports more complex storage profiles. vSphere 5.5 will upgrade legacy capability and requirement profiles for Storage Policy Server operations.

- [“VASA 1.0 Storage Capability Upgrade”](#) on page 31.
- [“vSphere Web Client User Label Conversion”](#) on page 32

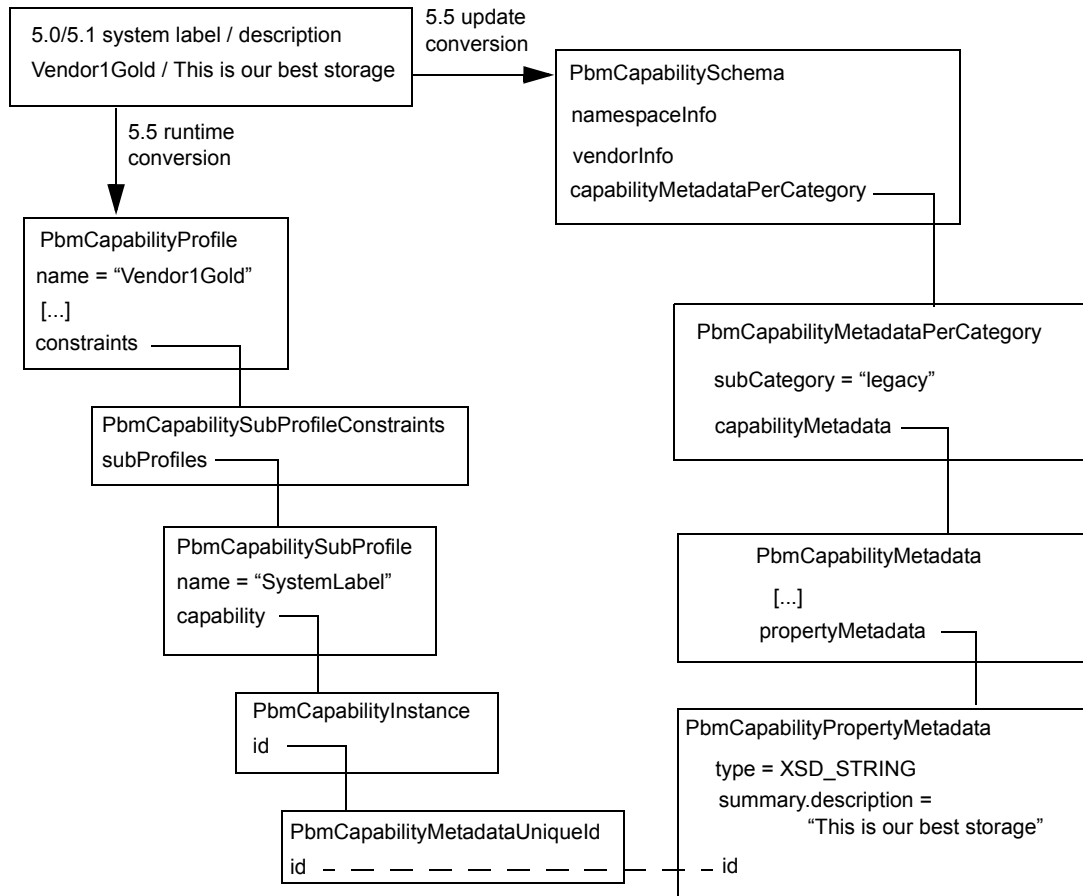
## VASA 1.0 Storage Capability Upgrade

A Storage Policy Server can obtain storage capability data from VASA providers. In vSphere 2013, this generally implies VMware VSAN storage capabilities. A Storage Policy Server can also obtain capability data from a VASA provider that was implemented for the vSphere 5.0/5.1 environment.

The early architecture (vSphere 5.0/5.1) supports a simple expression of storage capability. A VASA 1.0 provider can advertise one system label per datastore. A system label has an associated description.

The Storage Policy Server performs a runtime conversion of VASA 1.0 system labels. The Storage Policy API presents the system label as a storage capability profile. The Server also generates a capability schema for the storage label. The generated storage capability profile references the generated schema.

The following figure shows the Storage Policy data objects that are generated from a vSphere 5.0/5.1 legacy profile.

**Figure 7-1. Converted Legacy Capability Profile**

## vSphere Web Client User Label Conversion

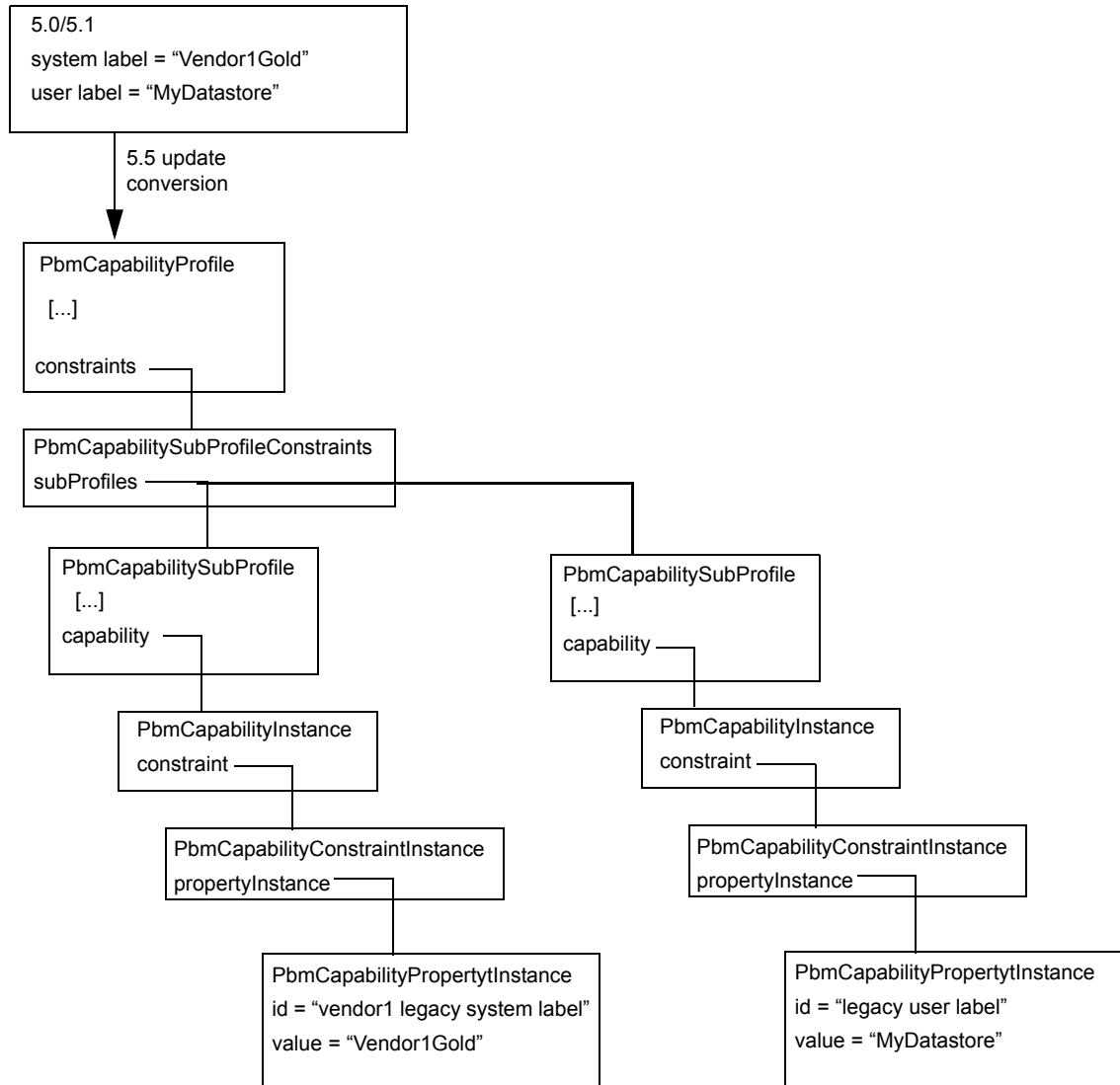
A vSphere 5.0/5.1 storage profile can reference user labels displayed in the vSphere Web Client. Users can associate a datastore with a user label. When you upgrade to vSphere 5.5, any existing 5.0/5.1 user labels will be converted into datastore tags.

A converted policy profile contains one subprofile for each label referenced by the original vSphere 5.0/5.1 profile.

- A system label reference is converted to a reference to the appropriate vendor-specific “legacy system label” capability generated from that label.
- A user label reference is converted to a reference to the appropriate datastore tag generated from that label.

The following figure shows the conversion of a vSphere 5.0/5.1 profile that references a system label “Vendor1Gold” and a user label “MyDatastores”. When you upgrade to vSphere 5.5, the system converts the profile into Storage Policy API elements.

- The legacy system label identifies the original source as a VASA 1.0 provider.
- The legacy user label identifies the original source as a 5.0/5.1 user label in the vSphere Web Client.

**Figure 7-2.** Converted Legacy Requirement Profile



# vCenter Single Sign-On Client Example



This chapter describes a Java example of acquiring a vCenter Single Sign-On security token.

- [“vCenter Single Sign-On Token Request Overview”](#) on page 35
- [“Using Handler Methods for SOAP Headers”](#) on page 36
- [“Sending a Request for a Security Token”](#) on page 38

## vCenter Single Sign-On Token Request Overview

The code examples in the following sections show how to use the `Issue` method to acquire a holder-of-key security token. To see an example of using the token to login to a vCenter Server, see [“vCenter LoginByToken Example”](#) on page 41. The code examples in this chapter are based on the following sample file located in the vCenter Single Sign-On SDK JAX-WS client `samples` directory:

```
.../JAXWS/samples/com/vmware/sso/client/samples/AcquireHoKTokenByUserCredentialSample.java
```

The `AcquireHoKTokenByUserCredentialSample` program creates a token request and calls the `issue` method to send the request to a vCenter Single Sign-On Server. The program uses a sample implementation of Web services message handlers to modify the SOAP security header for the request message.

This example uses the username-password security policy (`STSSecPolicy_UserPwd`). This policy requires that the SOAP security header include a timestamp, username and password, and a digital signature and certificate. The sample message handlers embed these elements in the message.

The example performs the following operations:

- 1 Create a security token service client object (`STSService_Service`). This object manages the vCenter Single Sign-On header handlers and it provides access to the vCenter Single Sign-On client API methods. This example uses the `issue` method.
- 2 Create a vCenter Single Sign-On header handler resolver object (`HeaderHandlerResolver`). This object acts as a container for the different handlers.
- 3 Add the handlers for timestamp, user credentials, certificate, and token extraction to the handler resolver.
- 4 Add the handler resolver to the security token service.
- 5 Retrieve the STS port (`STS_Service`) from the security token service object.
- 6 Create a security token request.
- 7 Set the request fields.
- 8 Set the endpoint in the request context. The endpoint identifies the vCenter Single Sign-On Server.
- 9 Call the `issue` method, passing the token request.
- 10 Handle the response from the vCenter Single Sign-On server.

## Using Handler Methods for SOAP Headers

The VMware vCenter Single Sign-On SDK provides sample code that is an extension of the JAX-WS XML Web services message handler (`javax.xml.ws.handler`). The sample code consists of a set of SOAP header handler methods and a header handler resolver, to which you add the handler methods. The handler methods insert timestamp, user credential, and message signature data into the SOAP security header for the request. A handler method extracts the SAML token from the vCenter Single Sign-On Server response.

The VMware vCenter Single Sign-On client SOAP header handler files are located in the `soaphandlers` directory:

SDK/sso/java/JAXWS/samples/com/vmware/sso/client/soaphandlers

To access the SOAP handler implementation, the example code contains the following import statements:

```
import com.vmware.sso.client.soaphandlers.HeaderHandlerResolver;
import com.vmware.sso.client.soaphandlers.SSOHeaderHandler;
import com.vmware.sso.client.soaphandlers.SamlTokenExtractionHandler
import com.vmware.sso.client.soaphandlers.TimestampHandler;
import com.vmware.sso.client.soaphandlers.UserCredentialHandler;
import com.vmware.sso.client.soaphandlers.WsSecurityUserCertificateSignatureHandler;
```

This example uses the following handler elements:

- HeaderHandlerResolver
- SamlTokenExtractionHandler
- TimestampHandler
- UserCredentialHandler
- WsSecurityUserCertificateSignatureHandler (SSOHeaderHandler)

The following sequence shows the operations and corresponding Java elements for message security.

- 1 Create an STS service object (`STSService_Service`). This object will bind the handlers to the request and provide access to the issue method.
- 2 Create a handler resolver object (`HeaderHandlerResolver`). This object acts as a receptacle for the handlers.
- 3 Add the header handlers:
  - Timestamp – The handler will use system time to set the timestamp values.
  - User credential – The handler requires a username and a password; it will create a username token for the supplied values.
  - User certificate signature – The handler requires a private key and an x509 certificate. The handler will use the private key to sign the body of the SOAP message (the token request), and it will embed the certificate in the SOAP security header.
  - SAML token extraction – The handler extracts the SAML token directly from vCenter Single Sign-On Server response to avoid token modification by the JAX-WS bindings.
- 4 Add the handler resolver to the STS service.

STSService\_Service

HeaderHandlerResolver

### HeaderHandler Resolver

- TimestampHandler
- UserCredentialHandler
- WsSecurityUserCertificateSignatureHandler (SSOHeaderHandler)
- SamlTokenExtractionHandler

STSService\_Service

handlerResolver

HeaderHandler Resolver

The following code fragment creates a handler resolver and adds the handler methods to the handler resolver. After the handlers have been established, the client creates a token request and calls the Issue method. See [“Sending a Request for a Security Token”](#) on page 38.

---

**IMPORTANT** You must perform these steps for message security before retrieving the STS service port. An example of retrieving the STS service port is shown in [“Sending a Request for a Security Token”](#) on page 38.

---

#### Example A-1. Acquiring a vCenter Single Sign-On Token – Soap Handlers

---

```

/*
 * Instantiate the STS Service
 */
STSService_Service stsService = new STSService_Service();

/*
 * Instantiate the HeaderHandlerResolver.
 */
HeaderHandlerResolver headerResolver = new HeaderHandlerResolver();

/*
 * Add handlers to insert a timestamp and username token into the SOAP security header
 * and sign the message.
 *
 * -- Timestamp contains the creation and expiration time for the request
 * -- UsernameToken contains the username/password
 * -- Sign the SOAP message using the combination of private key and user certificate.
 *
 * Add the TimeStampHandler
 */
headerResolver.addHandler(new TimeStampHandler());

/*
 * Add the UserCredentialHandler. arg[1] is the username; arg[2] is the password.
 */
UserCredentialHandler ucHandler = new UserCredentialHandler(args[1],args[2]);
headerResolver.addHandler(ucHandler);

/*
 * Add the message signature handler (WsSecurityUserCertificateSignatureHandler);
 * The client is responsible for supplying the private key and certificate.
 */
SSOHeaderHandler ssoHandler =
 new WsSecurityUserCertificateSignatureHandler(privateKey, userCert);
headerResolver.addHandler(ssoHandler);

/*
 * Add the token extraction handler (SamlTokenExtractionHandler).
 */
SamlTokenExtractionHandler sbHandler = new SamlTokenExtractionHandler();
headerResolver.addHandler(sbHandler);

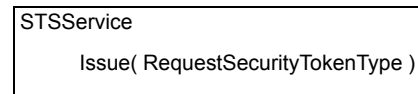
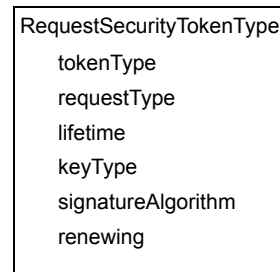
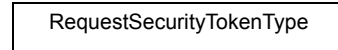
/*
 * Set the handlerResolver for the STSService to the HeaderHandlerResolver created above.
 */
stsService.setHandlerResolver(headerResolver);

```

## Sending a Request for a Security Token

After setting up the SOAP header handlers, the example creates a token request and calls the issue method. The following sequence shows the operations and corresponding Java elements.

- 5 Retrieve the STS service port (STSService). The service port provides access to the vCenter Single Sign-On client API methods. The vCenter Single Sign-On handler resolver must be associated with the STS service before you retrieve the service port. See [“Using Handler Methods for SOAP Headers”](#) on page 36.
- 6 Create a token request (RequestSecurityTokenType). Your vCenter Single Sign-On client will pass the token request to the Issue method. The Issue method will send the token request in the body of the SOAP message. This example sets the token request fields as appropriate for a holder-of-key token request.
- 7 Set the token request fields.
  - lifetime – Creation and expiration times.
  - token type – urn:oasis:names:tc:SAML:2.0:assertion
  - request type – <http://docs.oasis-open.org/ws-sx/ws-trust/200512/Issue>
  - key type – <http://docs.oasis-open.org/ws-sx/ws-trust/200512/PublicKey> (for holder-of-key token type)
  - signature algorithm – <http://www.w3.org/2001/04/xmldsig-more#rsa-sha256>
  - renewable status
- 8 Set the endpoint address for the token request.
- 9 Call the Issue method.
- 10 Handle the response from the vCenter Single Sign-On Server.



The following example shows Java code that performs these operations.

### Example A-2. Acquiring a vCenter Single Sign-On Token – Sending the Request

```

/*
 * Retrieve the STSServicePort from the STSService_Service object.
 */
STSService stsPort = stsService.getSTSServicePort();

/*
 * Create a token request object.
 */
RequestSecurityTokenType tokenType = new RequestSecurityTokenType();

/*
 * Create a LifetimeType object.
 */
LifetimeType lifetime = new LifetimeType();

/*
 * Derive the token creation date and time.
 * Use a GregorianCalendar to establish the current time,

```

```

 * then use a DatatypeFactory to map the time data to XML.
 */
 DatatypeFactory dtFactory = DatatypeFactory.newInstance();
 GregorianCalendar cal = new GregorianCalendar(TimeZone.getTimeZone("GMT"));
 XMLGregorianCalendar xmlCalendar = dtFactory.newXMLGregorianCalendar(cal);
 AttributedDateTime created = new AttributedDateTime();
 created.setValue(xmlCalendar.toXMLFormat());

 /*
 * Specify a time interval for token expiration (specified in milliseconds).
 */
 AttributedDateTime expires = new AttributedDateTime();
 xmlCalendar.add(dtFactory.newDuration(30 * 60 * 1000));
 expires.setValue(xmlCalendar.toXMLFormat());

 /*
 * Set the created and expires fields in the lifetime object.
 */
 lifetime.setCreated(created);
 lifetime.setExpires(expires);

 /*
 * Set the token request fields.
 */
 tokenType.setTokenType("urn:oasis:names:tc:SAML:2.0:assertion");
 tokenType.setRequestType("http://docs.oasis-open.org/ws-sx/ws-trust/200512/Issue");
 tokenType.setLifetime(lifetime);
 tokenType.setKeyType("http://docs.oasis-open.org/ws-sx/ws-trust/200512/PublicKey");
 tokenType.setSignatureAlgorithm("http://www.w3.org/2001/04/xmldsig-more#rsa-sha256");

 /*
 * Specify a token that can be renewed.
 */
 RenewingType renewing = new RenewingType();
 renewing.setAllow(Boolean.TRUE);
 renewing.setOK(Boolean.FALSE); // WS-Trust Profile: MUST be set to false
 tokenType.setRenewing(renewing);

 /* Get the request context and set the endpoint address. */
 Map<String, Object> reqContext = ((BindingProvider) stsPort).getRequestContext();
 reqContext.put(BindingProvider.ENDPOINT_ADDRESS_PROPERTY, args[0]);

 /*
 * Use the STS port to invoke the "issue" method to acquire the token
 * from the vCenter Single Sign-On Server.
 */
 RequestSecurityTokenResponseCollectionType issueResponse = stsPort.issue(tokenType);

 /*
 * Handle the response - extract the SAML token from the response. The response type
 * contains the token type (SAML token type urn:oasis:names:tc:SAML:2.0:assertion).
 */
 RequestSecurityTokenResponseType rstResponse = issueResponse.getRequestSecurityTokenResponse();
 RequestedSecurityTokenType requestedSecurityToken = rstResponse.getRequestedSecurityToken();

 /*
 * Extract the SAML token from the RequestedSecurityTokenType object.
 * The generic token type (Element) corresponds to the type required
 * for the SAML token handler that supports the call to LoginByToken.
 */
 Element token = requestedSecurityToken.getAny();

```



# B

## vCenter LoginByToken Example

---

This chapter describes a Java example of using the `LoginByToken` method.

- [“vCenter Server Single Sign-On Session”](#) on page 41
- [“Saving the vCenter Server Session Cookie”](#) on page 43
- [“Using LoginByToken”](#) on page 44
- [“Restoring the vCenter Server Session Cookie”](#) on page 45

### vCenter Server Single Sign-On Session

After you obtain a SAML token from the vCenter Single Sign-On Server, you can use the vSphere API method `LoginByToken` to establish a single sign-on session with a vCenter Server. See [“vCenter Single Sign-On Client Example”](#) on page 35 for an example of obtaining a vCenter Single Sign-On token.

At the beginning of a vCenter Single Sign-On session, your client is responsible for the following tasks:

- Maintain the vCenter session cookie. The vSphere architecture uses an HTTP cookie to support a persistent connection between a vSphere client and a vCenter Server. During the initial connection, the Server produces a session cookie. Operations during the login sequence will reset the request context so your client must save this cookie and re-introduce it at the appropriate times.
- Insert the vCenter Single Sign-On token and a timestamp into the SOAP header of the `LoginByToken` message.

The example program uses these general steps:

- 1 Call the `RetrieveServiceContent` method to establish an HTTP connection with the vCenter Server and save the HTTP session cookie. The client uses an HTTP header handler method to extract the cookie from the vCenter Server response.
- 2 Call the `LoginByToken` method to authenticate the vCenter session. To send the token to the vCenter Server, the client uses a handler to embed the token and a time stamp in the SOAP header for the message. To identify the session started with the `RetrieveServiceContent` method, the client uses a handler to embed the session cookie in the HTTP header.
- 3 Restore the session cookie.

### HTTP and SOAP Header Handlers

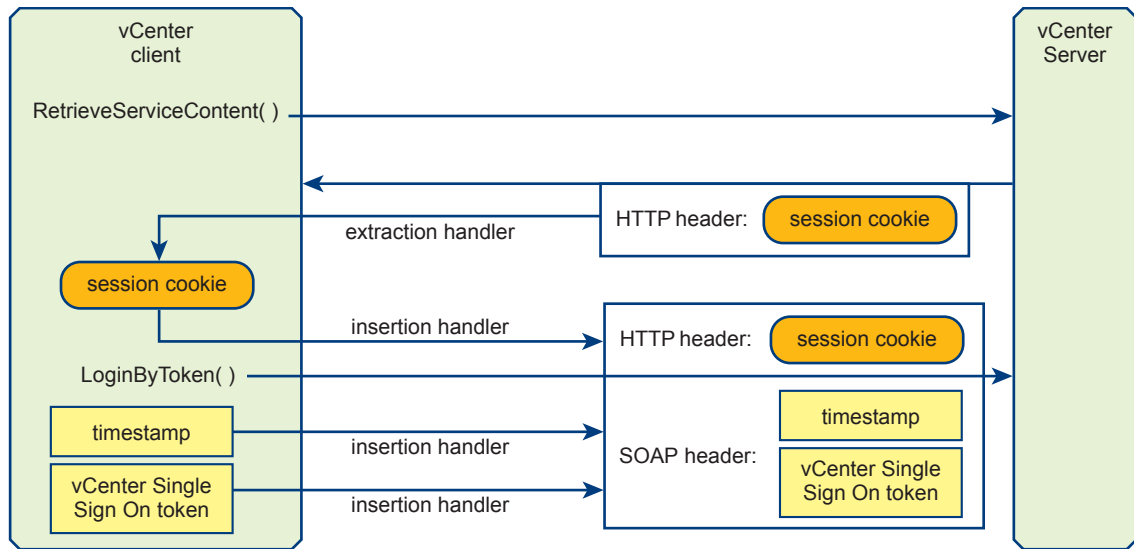
To use a vCenter Single Sign-On token to login to a vCenter Server, the example uses header handlers to manipulate the HTTP and SOAP header elements of the login request. After establishing a handler, subsequent requests automatically invoke the handler.

- An extraction handler obtains the HTTP session cookie provided by the vCenter Server. After setting up the handler, a call to the `RetrieveServiceContent` method will invoke the handler to extract the cookie from the Server response.

- Insertion handlers put the vCenter Single Sign-On token and a timestamp into the SOAP header and the session cookie into the HTTP header of the login request.

The following figure shows the use of handlers to manipulate header elements when establishing a vCenter Single Sign-On session with a vCenter Server.

**Figure B-1. Starting a vCenter Session**



**IMPORTANT** Every call to the vCenter Server will invoke any message handlers that have been established. The overhead involved in using the SOAP and HTTP message handlers is not necessary after the session has been established. The example saves the default message handler before setting up the SOAP and HTTP handlers. After establishing the session, the example will reset the handler chain and restore the default handler.

The example code also uses multiple calls to the `VimPortType.getVimPort` method to manage the request context. The `getVimPort` method clears the HTTP request context. After each call to the `getVimPort` method, the client resets the request context endpoint address to the vCenter Server URL. After the client has obtained the session cookie, it will restore the cookie in subsequent requests.

## Sample Code

The code examples in the following sections show how to use the `LoginByToken` method with a holder-of-key security token. The code examples are based on the sample code contained in the vCenter Single Sign-On SDK. The files are located in the Java samples directory (SDK/ssoclient/java/JAXWS/samples):

- `LoginByToken` sample:  
`samples/com/vmware/vsphere/samples/LoginByTokenSample.java`
- Header cookie handlers:  
`samples/com/vmware/vsphere/soaphandlers/HeaderCookieHandler.java`  
`samples/com/vmware/vsphere/soaphandlers/HeaderCookieExtractionHandler.java`
- SOAP header handlers. These are the same handlers that are used in “[vCenter LoginByToken Example](#)” on page 41. The SOAP handler files are located in the vCenter Single Sign-On client `soaphandlers` directory:  
`samples/com/vmware/sso/client/soaphandlers`

## Saving the vCenter Server Session Cookie

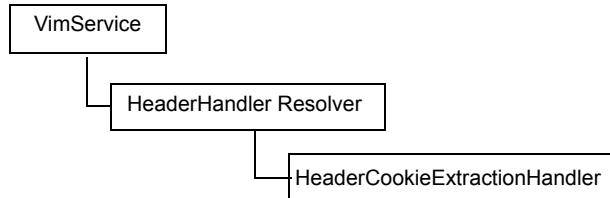
The code fragment in this section establishes an HTTP session with the vCenter Server and saves the HTTP session cookie.

The following sequence describes these steps and shows the corresponding objects and methods.

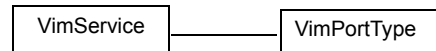
- 1 Use the `getHandlerResolver` method to save the default message handler. To use the HTTP and SOAP message handlers, you must first save the default message handler so that you can restore it after login. The HTTP and SOAP message handlers impose overhead that is unnecessary after login.

```
VimService.getHandlerResolver()
```

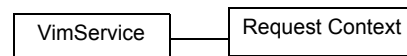
- 2 Set the cookie handler. The `HeaderCookieExtractionHandler` method retrieves the HTTP cookie.



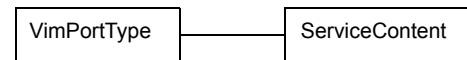
- 3 Get the VIM port. The VIM port provides access to the vSphere API methods, including the `LoginByToken` method.



- 4 Set the request context endpoint address to the vCenter Server URL.



- 5 Retrieve the `ServiceContent`. This method establishes the HTTP connection and sets the session cookie.



- 6 Extract the cookie and save it for later use.

```
HeaderCookieExtractionHandler.getCookie ()
```

The following example shows Java code that saves the session cookie.

### Example B-1. Saving the vCenter Server Session Cookie

```

/*
 * The example uses a SAML token (obtained from a vCenter Single Sign-On Server)
 * and the vCenter Server URL.
 * The following declarations indicate the datatypes; the token datatype (Element) corresponds
 * to the token datatype returned by the vCenter Single Sign-On Server.
 *
 * Element token; -- from vCenter Single Sign-On Server
 * String vcServerUrl; -- identifies vCenter Server
 *
 * First, save the default message handler.
 */

HandlerResolver defaultHandler = vimService.getHandlerResolver();

/*
 * Create a VIM service object.
 */
vimService = new VimService();

/*
 * Construct a managed object reference for the ServiceInstance.

```

```

 */
 ManagedObjectReference SVC_INST_REF = new ManagedObjectReference();
 SVC_INST_REF.setType("ServiceInstance");
 SVC_INST_REF.setValue("ServiceInstance");

 /*
 * Create a handler resolver.
 * Create a cookie extraction handler and add it to the handler resolver.
 * Set the VIM service handler resolver.
 */
 HeaderCookieExtractionHandler cookieExtractor = new HeaderCookieExtractionHandler();
 HeaderHandlerResolver handlerResolver = new HeaderHandlerResolver();
 handlerResolver.addHandler(cookieExtractor);
 vimService.setHandlerResolver(handlerResolver);

 /*
 * Get the VIM port for access to vSphere API methods. This call clears the request context.
 */
 vimPort = vimService.getVimPort();

 /*
 * Get the request context and set the connection endpoint.
 */
 Map<String, Object> ctxt = ((BindingProvider) vimPort).getRequestContext();
 ctxt.put(BindingProvider.ENDPOINT_ADDRESS_PROPERTY, vcServerUrl);
 ctxt.put(BindingProvider.SESSION_MAINTAIN_PROPERTY, true);

 /*
 * Retrieve the ServiceContent. This call establishes the HTTP connection.
 */
 serviceContent = vimPort.retrieveServiceContent(SVC_INST_REF);

 /*
 * Save the HTTP cookie.
 */
 String cookie = cookieExtractor.getCookie();

```

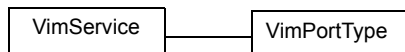
## Using LoginByToken

The code fragment in this section sets up the message handlers and calls the `LoginByToken` method. The following sequence describes the steps and shows the corresponding objects and methods.

- 1 Create a new `HeaderHandlerResolver`. Then set the message security handlers for cookie insertion and for inserting the SAML token and credentials in the SOAP header.

| HeaderHandler Resolver                                             |
|--------------------------------------------------------------------|
| — HeaderCookieHandler (session cookie)                             |
| — TimestampHandler                                                 |
| — SamlTokenHandler (SAML token)                                    |
| — WsSecurityUserCertificateSignatureHandler (key, certificate, ID) |

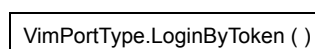
- 2 Get the VIM port.



- 3 Set the connection endpoint in the HTTP request context.



- 4 Call the `LoginByToken` method. The method invocation executes the handlers to insert the elements into the message headers. The method authenticates the session referenced by the session cookie.



The following examples shows Java code that calls the LoginByToken method.

### Example B-2. Using LoginByToken

```

/*
 * Create a handler resolver and add the handlers.
 */
HandlerResolver handlerResolver = new HandlerResolver();
handlerResolver.addHandler(new TimestampHandler());
handlerResolver.addHandler(new SamlTokenHandler(token));
handlerResolver.addHandler(new HeaderCookieHandler(cookie));
handlerResolver.addHandler(new WsSecuritySignatureAssertionHandler(
 userCert.getPrivateKey(),
 userCert.getUserCert(),
 Utils.getNodeProperty(token, "ID")));
vimService.setHandlerResolver(handlerResolver);

/*
 * Get the Vim port; this call clears the request context.
 */
vimPort = vimService.getVimPort();

/*
 * Retrieve the request context and set the server URL.
 */
Map<String, Object> ctxt = ((BindingProvider) vimPort).getRequestContext();
ctxt.put(BindingProvider.ENDPOINT_ADDRESS_PROPERTY, vcServerUrl);
ctxt.put(BindingProvider.SESSION_MAINTAIN_PROPERTY, true);

/*
 * Call LoginByToken.
 */
UserSession us = vimPort.loginByToken(serviceContent.getSessionManager(), null);

```

## Restoring the vCenter Server Session Cookie

After you log in, you must restore the standard vCenter session context. The code fragment in this section restores the default message handler and the session cookie. As the cookie handler has been replaced by the default handler, the client resets the session cookie by calling request context methods to access the context fields directly. The following sequence describes these steps and shows the corresponding objects and methods.

- 1 Restore the default message handler. The handlers used for LoginByToken are not used in subsequent calls to the vSphere API.
- 2 Get the VIM port.
- 3 Set the connection endpoint in the HTTP request context.
- 4 Set the HTTP request header (vCenter session cookie).

VimService.setHandlerResolver ( )

VimService — VimPortType

VimService — Request Context

RequestContext.get ( )  
RequestContext.put ( )

The following example shows Java code that restores the vCenter session. This code requires the vCenter URL and the cookie and default handler that were retrieved before login. See [“Sample Code”](#) on page 42.

**Example B-3. Restoring the vCenter Server Session**

---

```

/*
 * Reset the default handler. This overwrites the existing handlers, effectively removing them.
 */
vimService.setHandlerResolver(defaultHandler);
vimPort = vimService.getVimPort();

/*
 * Restore the connection endpoint in the request context.
 */
// Set the validated session cookie and set it in the header for once,
// JAXWS will maintain that cookie for all the subsequent requests

Map<String, Object> ctxt = ((BindingProvider) vimPort).getRequestContext();
ctxt.put(BindingProvider.ENDPOINT_ADDRESS_PROPERTY, vcServerUrl);
ctxt.put(BindingProvider.SESSION_MAINTAIN_PROPERTY, true);

/*
 * Reset the cookie in the request context.
 */
Map<String, List<String>> headers = (Map<String, List<String>>)
 ctxt.get(MessageContext.HTTP_REQUEST_HEADERS);
if (headers == null) {
 headers = new HashMap<String, List<String>>();
}
headers.put("Cookie", Arrays.asList(cookie));
ctxt.put(MessageContext.HTTP_REQUEST_HEADERS, headers);

```

# Index

## Symbols

.vmdk file **7**

.vmx file **7**

## A

access to methods **9**

acquire a token

    Java example **35**

## C

capabilities, storage **7, 17, 25**

capability metadata **17**

certificate

    X509 **36**

client SDK **10**

client-server connection

    Storage Policy Server **13**

    vCenter Server **13, 41**

    VMware Single Sign-On server **35**

create a storage profile **17, 26**

## E

example

    access to Storage Policy API methods **8**

    acquire a token (Java) **35**

    create a storage profile **18, 26**

    create an individual storage requirement **18, 29**

    LoginByToken (Java) **41**

## F

FileBackedVirtualDiskSpec **8**

## H

holder-of-key token

    example **35**

HTTP header methods

    Java example **45**

    LoginByToken (Java) **41**

## I

Issue method

    Java example **35**

## J

Java

    sample project

        acquire token **35**

    LoginByToken **41**

JAX-WS

    SDK

        contents **10**

    SOAP header methods

        example **36**

## L

legacy storage profile **31**

LoginByToken method

    Java example **41**

## M

metadata **17**

    retrieving **19**

## P

PbmComplianceManager **9**

PbmPlacementSolver **9**

PbmPortType **8**

PbmProfileProfileManager **8, 9**

PbmService **8**

PbmServiceInstanceContent **9**

## Q

queries, storage profile **9**

## R

requirements, storage **7, 17, 25**

retrieving metadata **19**

## S

SDK

    examples **10**

    SDK contents **10**

    SDK, VMware Storage Policy **10**

    server URLs **14**

    session cookie **42, 43, 45**

    SOAP header methods

        example **36**

        LoginByToken (Java) **41**

    SSO Server URL **14**

    storage capabilities and requirements **7, 17, 25**

    storage policy managed objects

        PbmComplianceManager **8**

        PbmPlacementSolver **8**

- PbmProfileProfileManager **8**
- storage policy operations **8**
- Storage Policy Server
  - connection **13**
  - URL **14**
- storage policy tag **25**
- storage profile
  - creation **17, 26**
  - legacy **31**
  - queries **9**

## **T**

- tag, storage policy **25**
- tag-based storage **7, 25**
- token
  - holder-of-key example **35**
  - LoginByToken example (Java) **41**

## **U**

- URLs for SSO, vCenter, and Storage Policy servers **14**

## **V**

- VASA
  - 1.0 providers **31**
  - 2.0 providers **7**
- vCenter Server session **41**
- vCenter Server URL **14**
- virtual machine files **7**
- VirtualDeviceFileBackingInfo **8**
- VirtualMachineConfigSpec **8**
- VirtualMachineFileInfo **8**
- VMware Storage Policy
  - client SDK **10**
- VMware Storage Policy API
  - client methods **8**
- VMware Storage Policy SDK **10**
- VSAN **7, 17**
- vSphere Web Client **25**

## **W**

- Web Service access object **8**

## **X**

- X509 certificate **36**